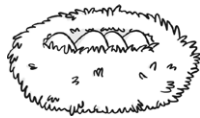


Monday

# Egg or Not?

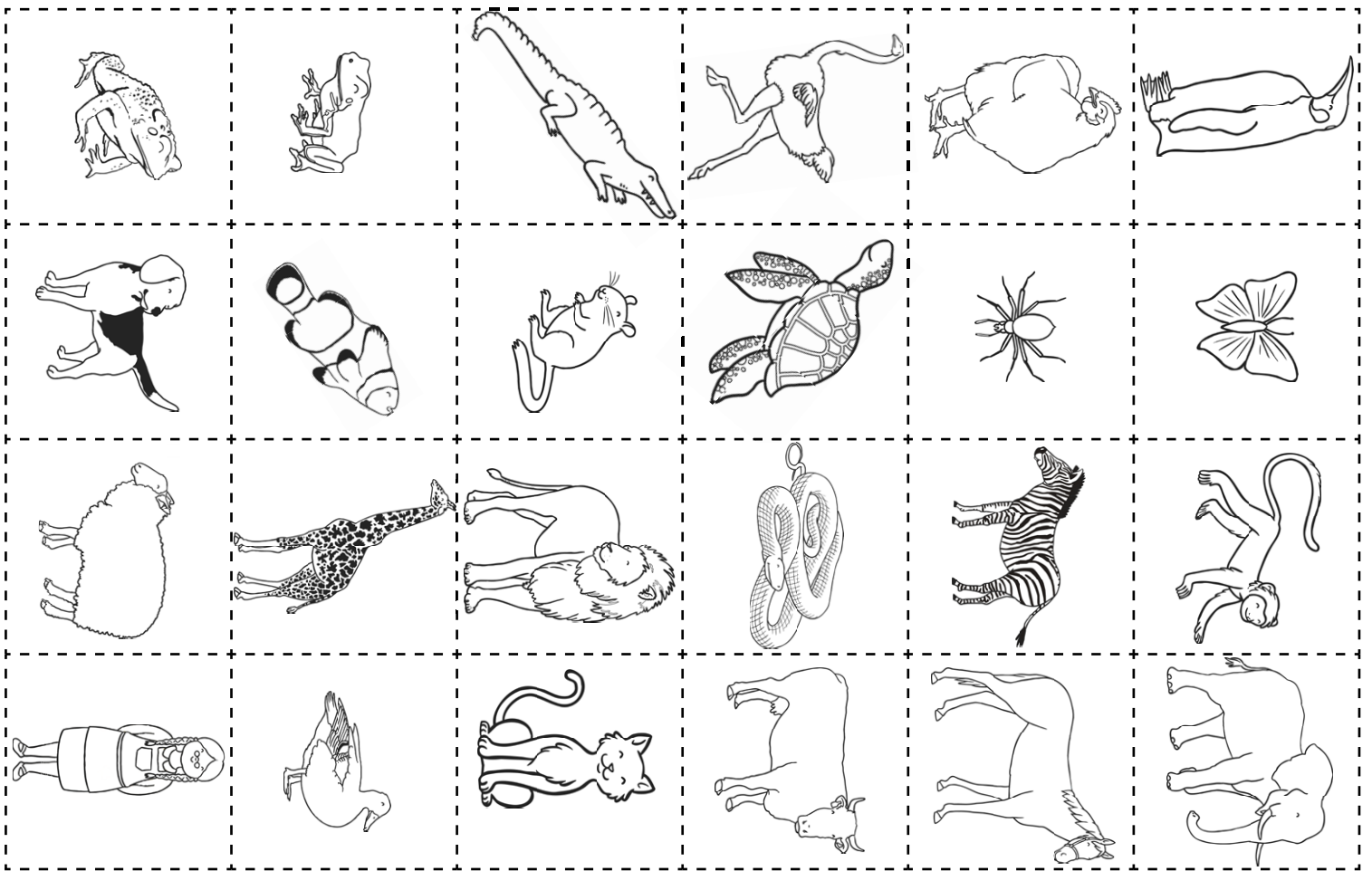
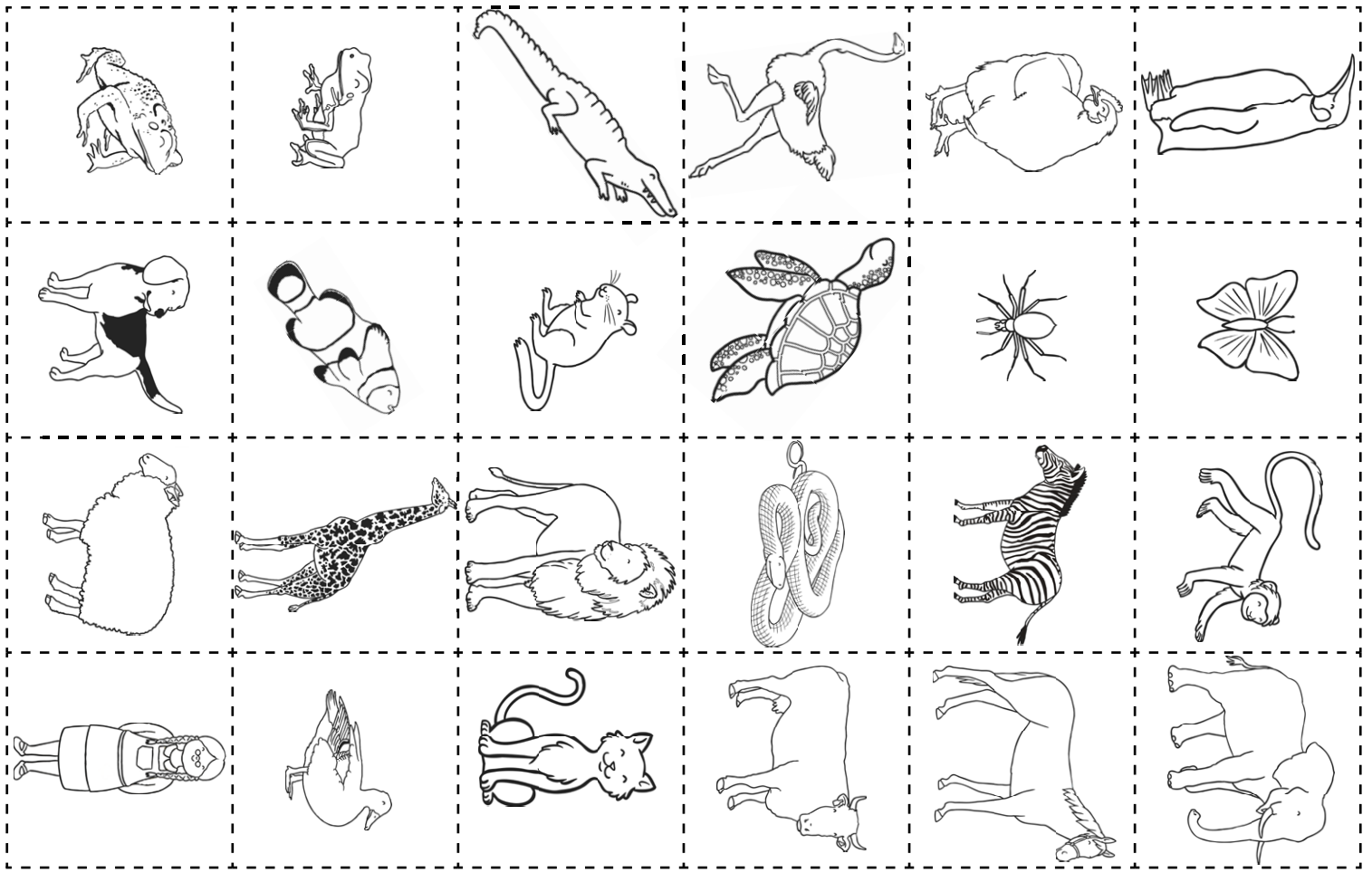


These animals hatch from an egg.



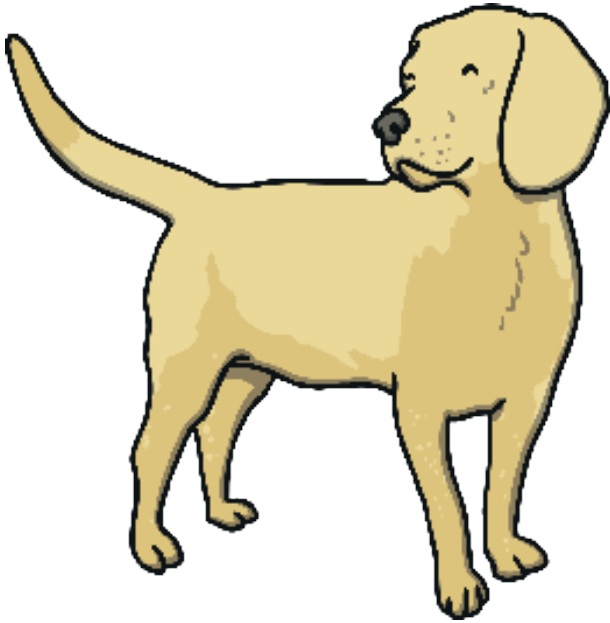
These animals grow inside their mothers and are born.





Tuesday

**dog**



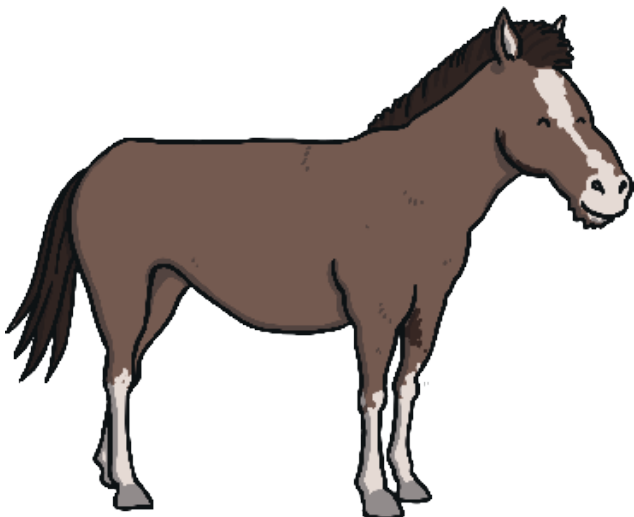
twinkl.com

**kitten**



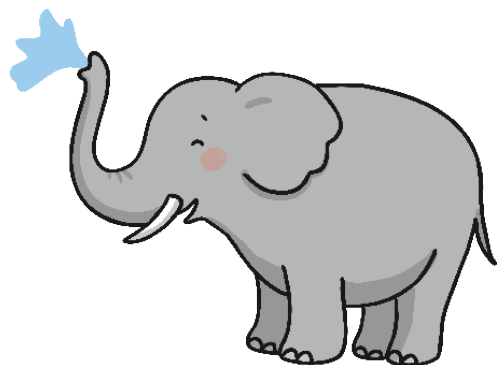
twinkl.com

**horse**



twinkl.com

**elephant calf**



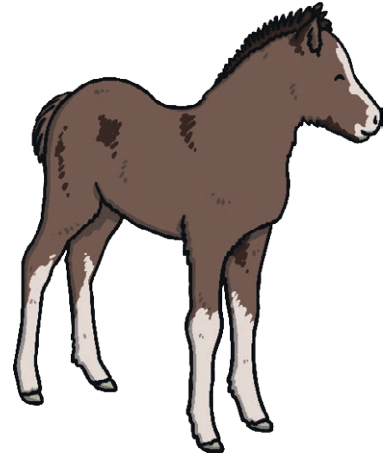
twinkl.com

**cat**



twinkl.com

**foal**



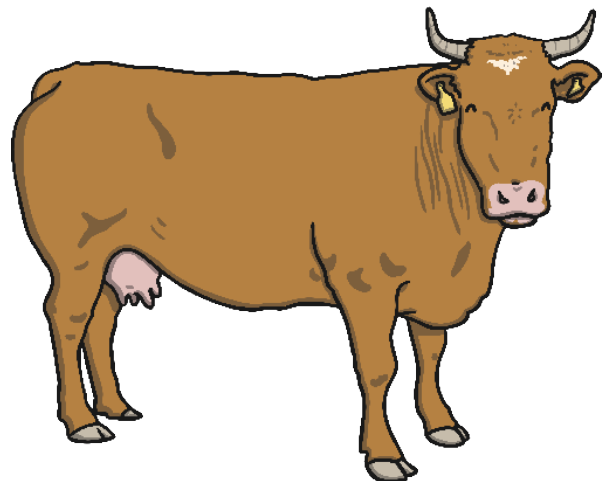
twinkl.com

**puppy**



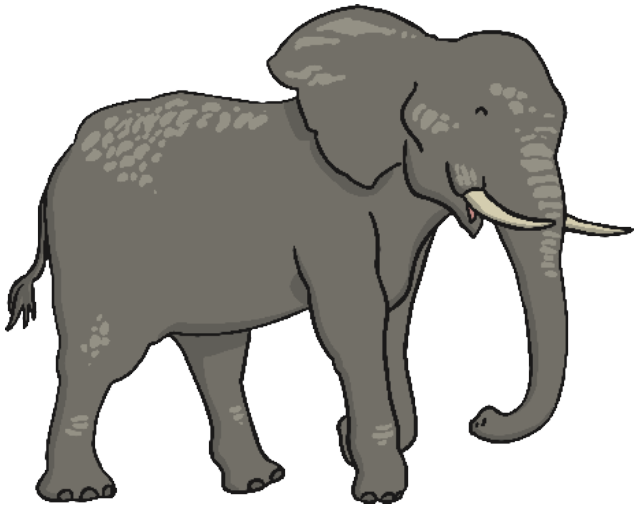
twinkl.com

**cow**



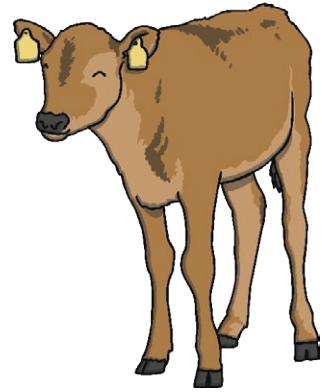
twinkl.com

**elephant**



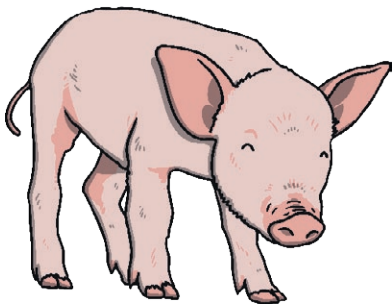
twinkl.com

**calf**



twinkl.com

**piglet**



twinkl.com

**owlet**



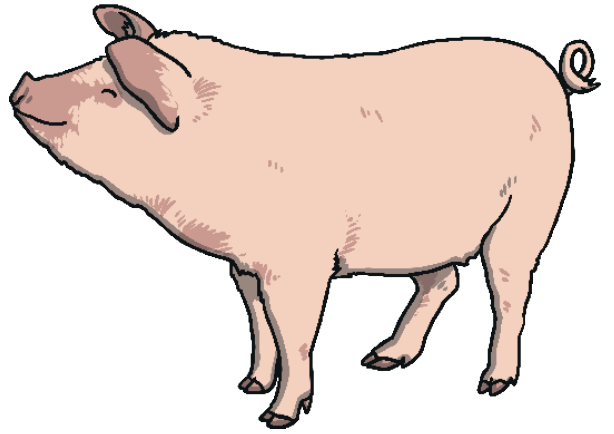
twinkl.com

**owl**



twinkl.com

**pig**



twinkl.com

**frog**



twinkl.com

**bear**



twinkl.com

**tadpole**



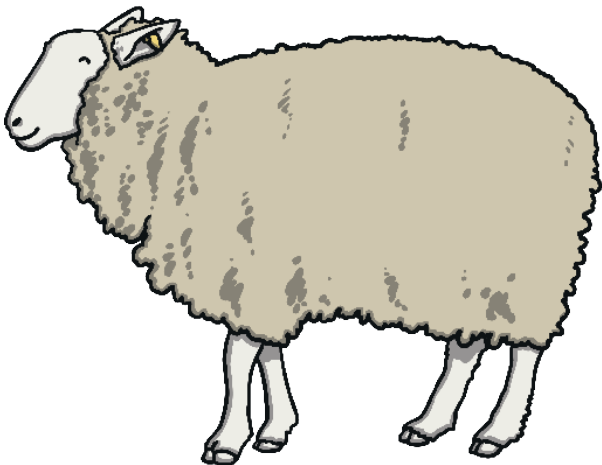
twinkl.com

**bear cub**



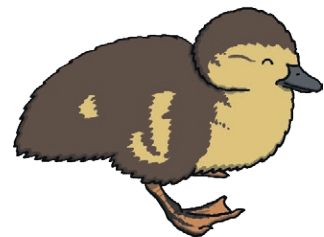
twinkl.com

**sheep**



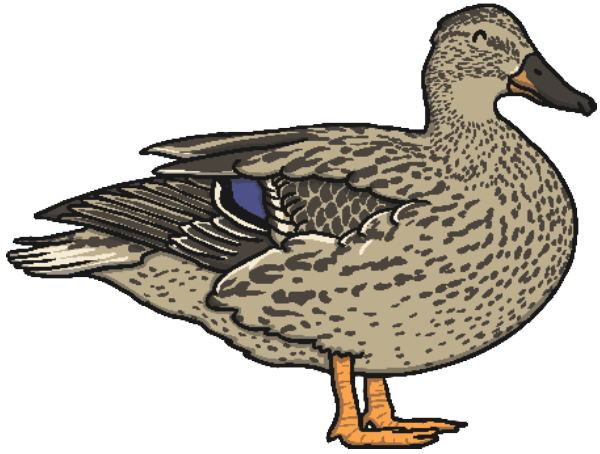
twinkl.com

**duckling**



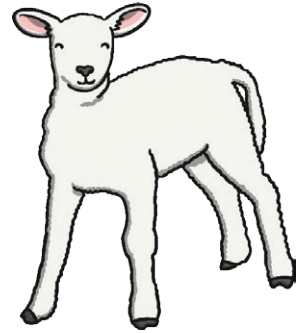
twinkl.com

**duck**



twinkl.com

**lamb**



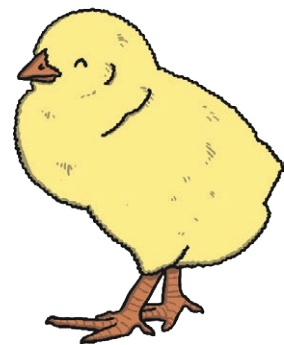
twinkl.com

**butterfly**



twinkl.com

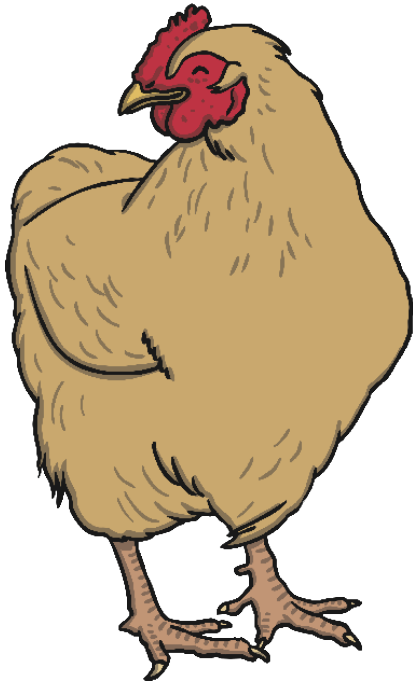
**chick**



twinkl.com

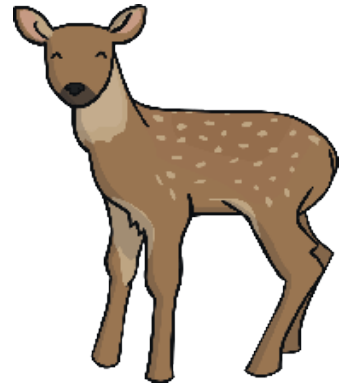


**chicken**



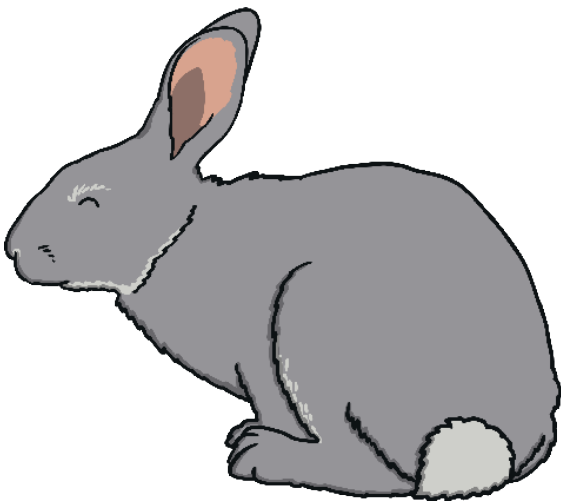
twinkl.com

**fawn**



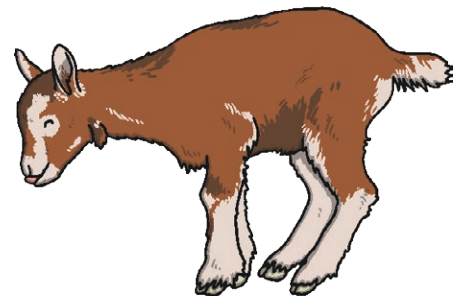
twinkl.com

**rabbit**



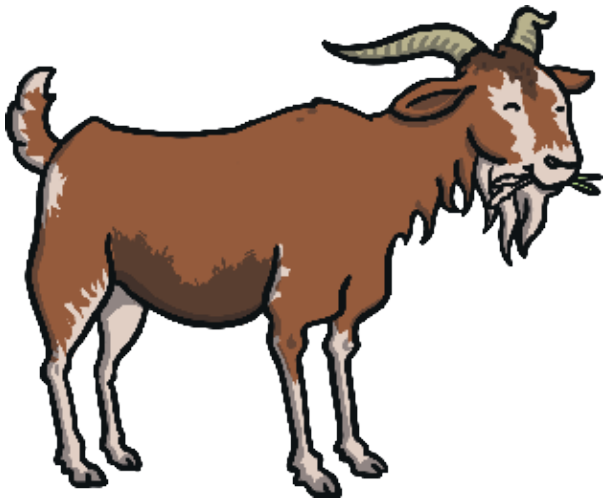
twinkl.com

**kid**



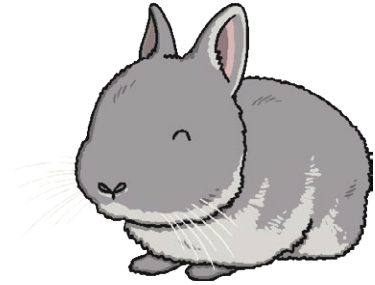
twinkl.com

**goat**



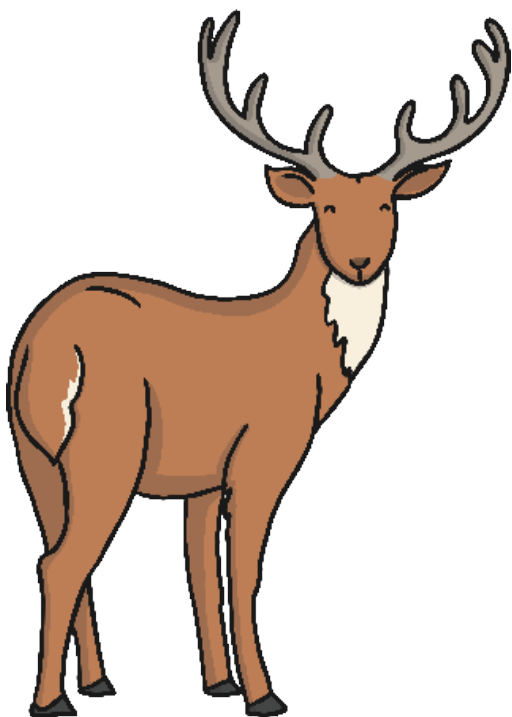
twinkl.com

**kitten (kit)**



twinkl.com

**deer**



twinkl.com

**caterpillar**



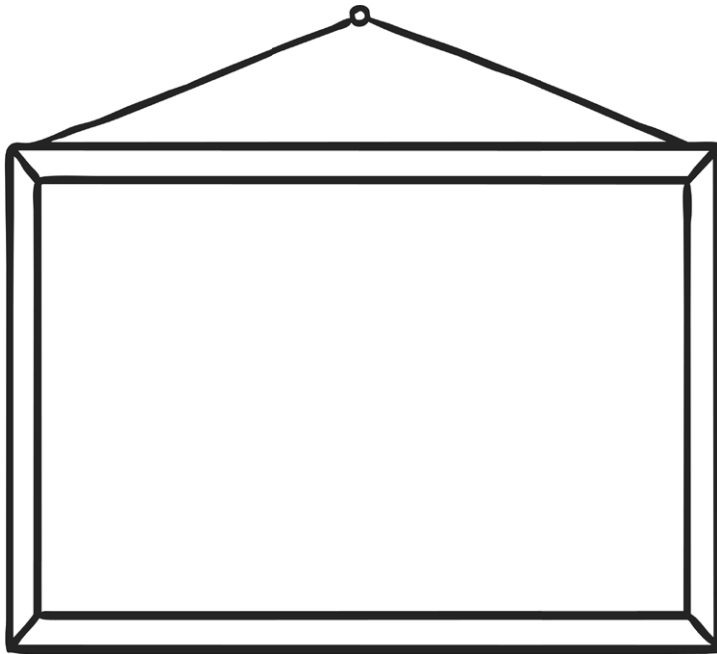
twinkl.com

# Wednesday How Animals Grow

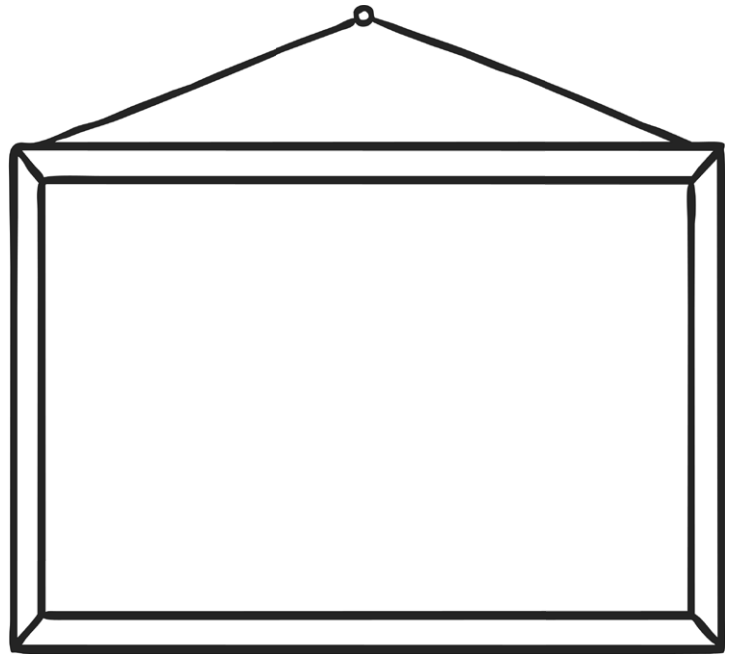


Choose an animal. Draw how it looks when it is a baby and how it looks when it is an adult.  
Describe how your animal changes as it grows.

Baby



Adult



How does it change as it grows?

---

---

---

---

---

---

---

---

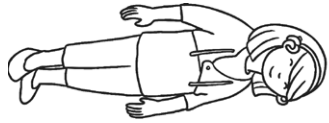
Baby



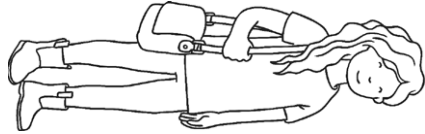
Toddler



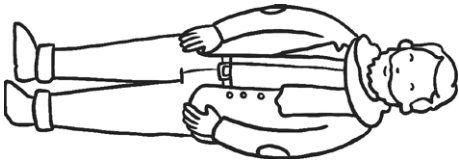
Child



Teenager



Adult



Elderly



Thursday

# Growing and Changing



By \_\_\_\_\_

Baby

Toddler

Glue the correct label here.

Glue the correct label here.

Child

Teenager

Glue the correct label here.

Glue the correct label here.

Adult

Elderly

Glue the correct label here.

Glue the correct label here.

## Labels

- Learning lots of skills.
  - Baby teeth falling out.
  - Feet and body growing.
  - Getting bigger, stronger and smarter.
- 
- Likes to try things on their own.
  - Eats a lot as they are growing very fast.
  - Might be moody or have spots.
  - New hormones to help them grow and change.
- 
- Born helpless.
  - Can only drink milk.
  - Must be kept clean and warm.
  - Likes to be cuddled and held.
- 
- Not as strong as they were.
  - Joints and muscles might ache.
  - Grey or white hair.
  - Soft skin and wrinkles.
- 
- Fully grown.
  - Can take care of themselves.
  - Might start a family of their own.
  - Need to exercise and eat well.
- 
- Starting to walk and talk.
  - Wobbly on their feet.
  - Starting to try different food.
  - Needs lots of love and care.

## Labels

- Learning lots of skills.
  - Baby teeth falling out.
  - Feet and body growing.
  - Getting bigger, stronger and smarter.
- 
- Likes to try things on their own.
  - Eats a lot as they are growing very fast.
  - Might be moody or have spots.
  - New hormones to help them grow and change.
- 
- Born helpless.
  - Can only drink milk.
  - Must be kept clean and warm.
  - Likes to be cuddled and held.
- 
- Not as strong as they were.
  - Joints and muscles might ache.
  - Grey or white hair.
  - Soft skin and wrinkles.
- 
- Fully grown.
  - Can take care of themselves.
  - Might start a family of their own.
  - Need to exercise and eat well.
- 
- Starting to walk and talk.
  - Wobbly on their feet.
  - Starting to try different food.
  - Needs lots of love and care.



Friday **Baby**



twinkl.co.uk

**Toddler**



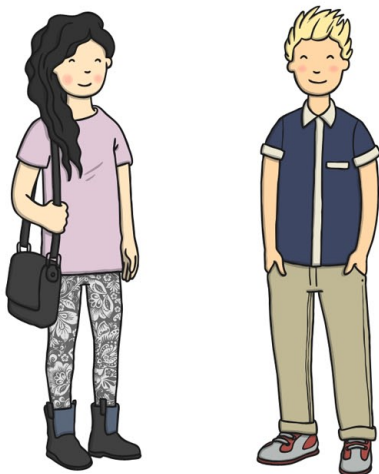
twinkl.co.uk

**Child**



twinkl.co.uk

**Teenager**



twinkl.co.uk

**Adult**

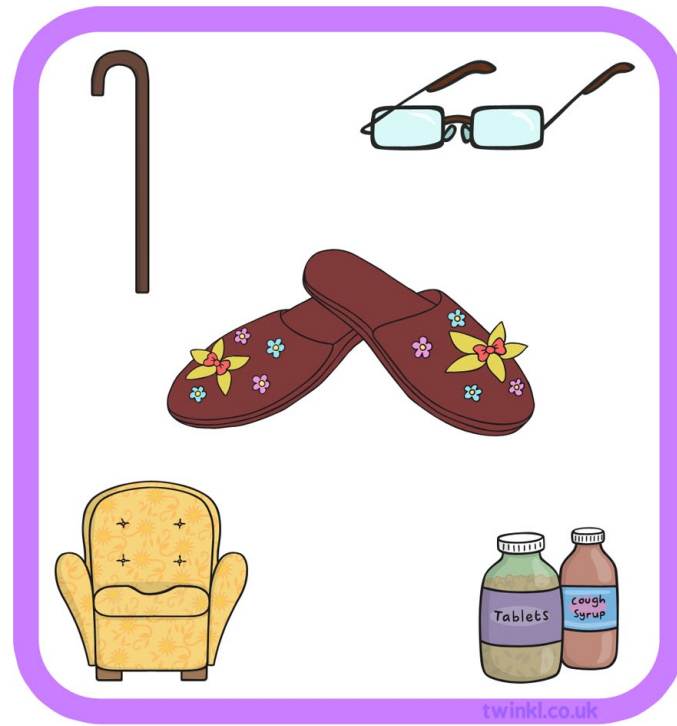
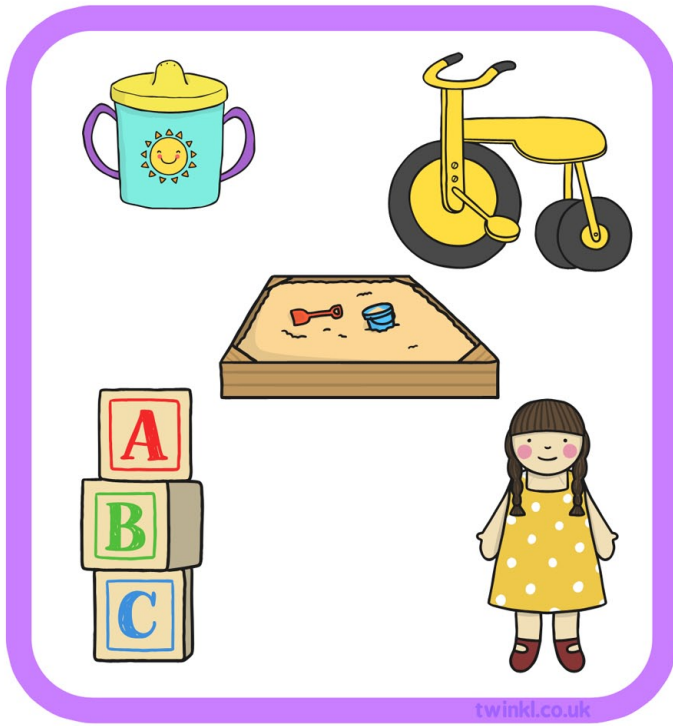


twinkl.co.uk

**Elderly**



twinkl.co.uk



Born helpless.

Can only drink milk.

Must be kept clean  
and warm.

Likes to be cuddled  
and held.

[twinkl.co.uk](https://www.twinkl.co.uk)

Starting to walk and talk.

Wobbly on their feet.

Starting to try  
different food.

Still needs to be kept safe  
and given lots of love.

[twinkl.co.uk](https://www.twinkl.co.uk)

Learning lots of skills.

Baby teeth falling out.

Feet and body growing.

Getting bigger, stronger  
and smarter.

[twinkl.co.uk](https://www.twinkl.co.uk)

Likes to try things on  
their own.

Eats a lot as they are  
growing very fast.

New hormones to help  
them grow and change

Might be moody or  
have spots.

[twinkl.co.uk](https://www.twinkl.co.uk)

Fully grown.

Can take care of  
themselves.

Might start a family of  
their own.

Need to exercise and  
eat well.

[twinkl.co.uk](https://www.twinkl.co.uk)

Not as strong as  
they were.

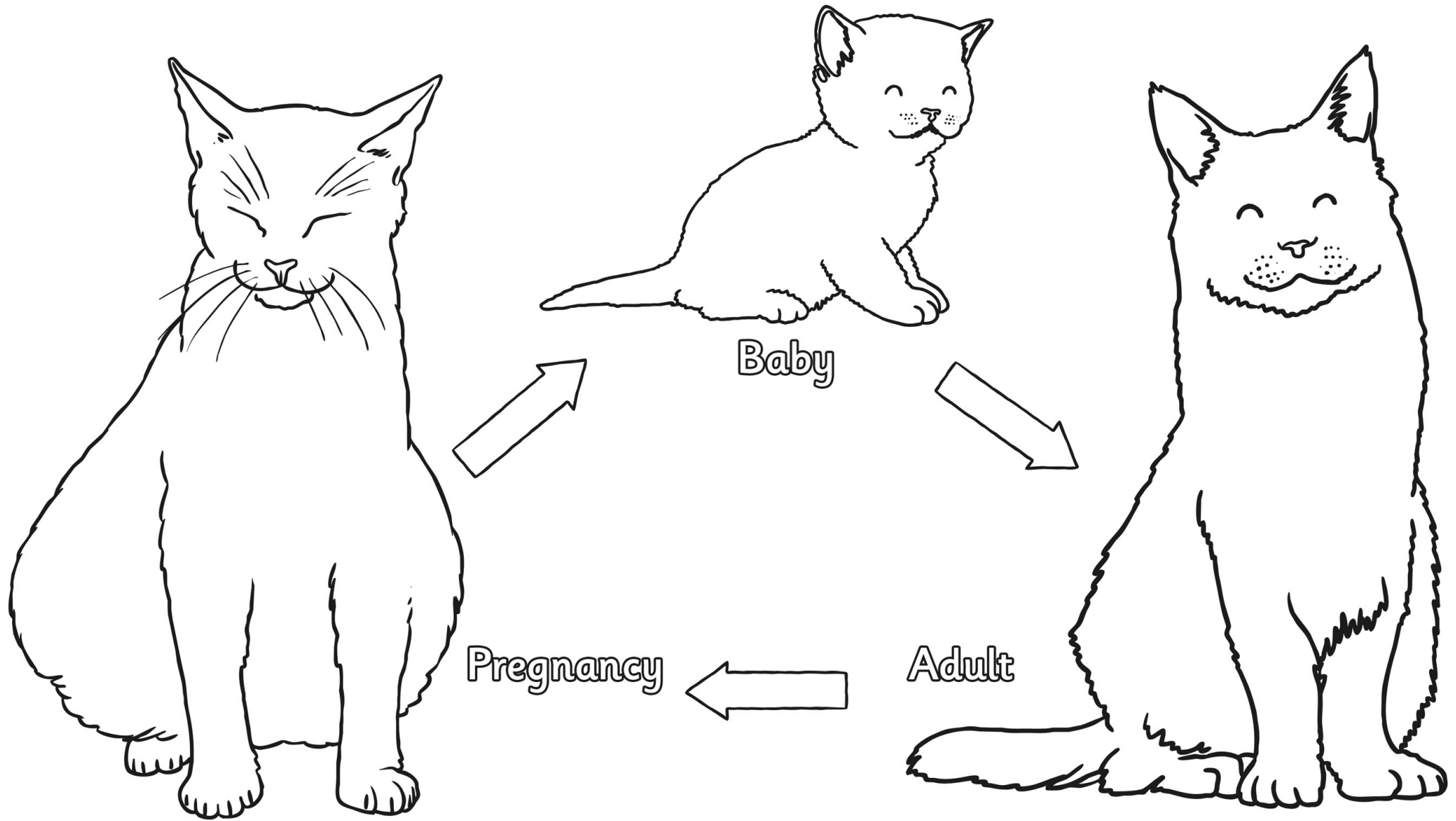
Joints and muscles  
might ache.

Grey or white hair.

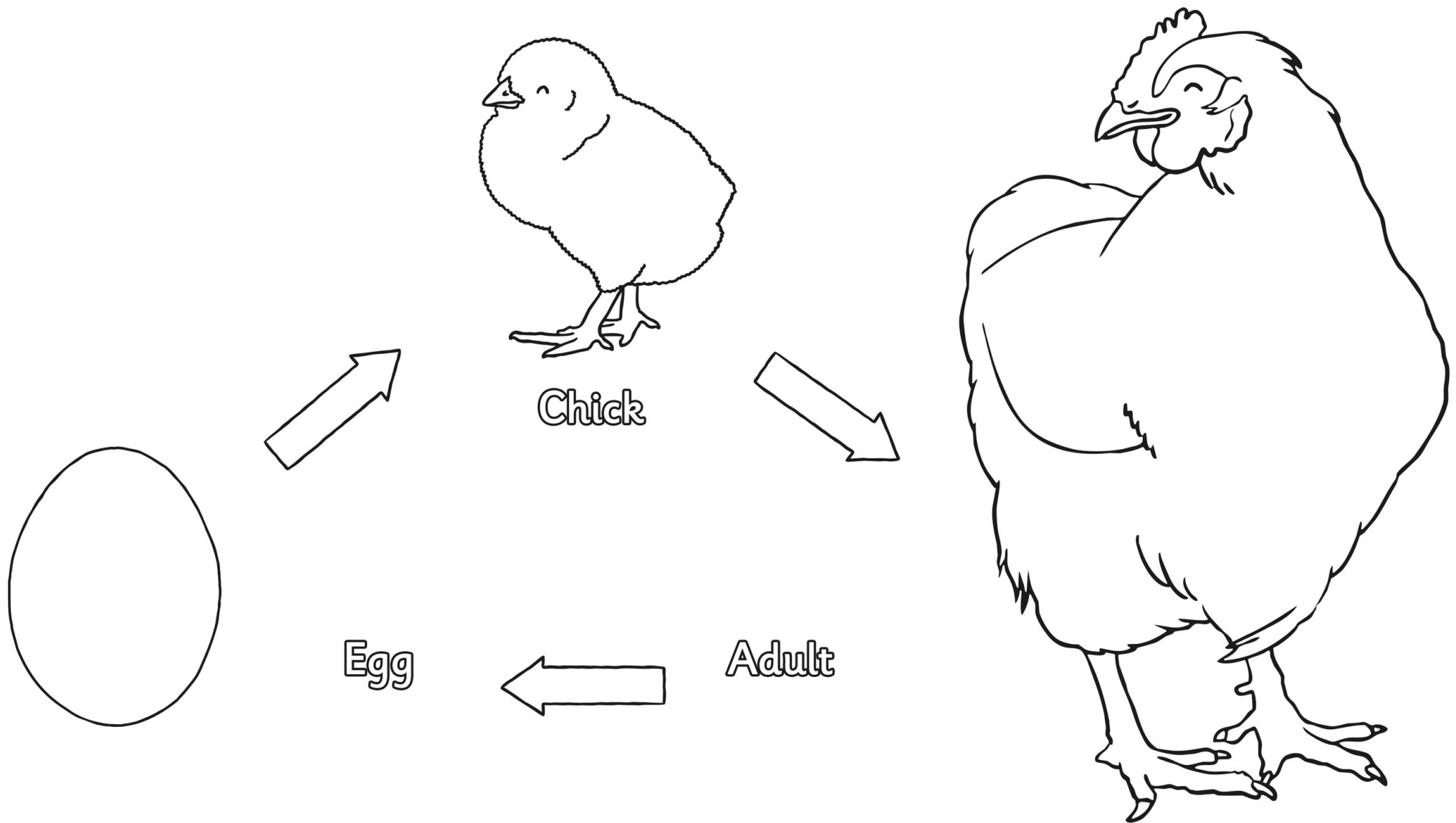
Soft skin and wrinkles.

[twinkl.co.uk](https://www.twinkl.co.uk)

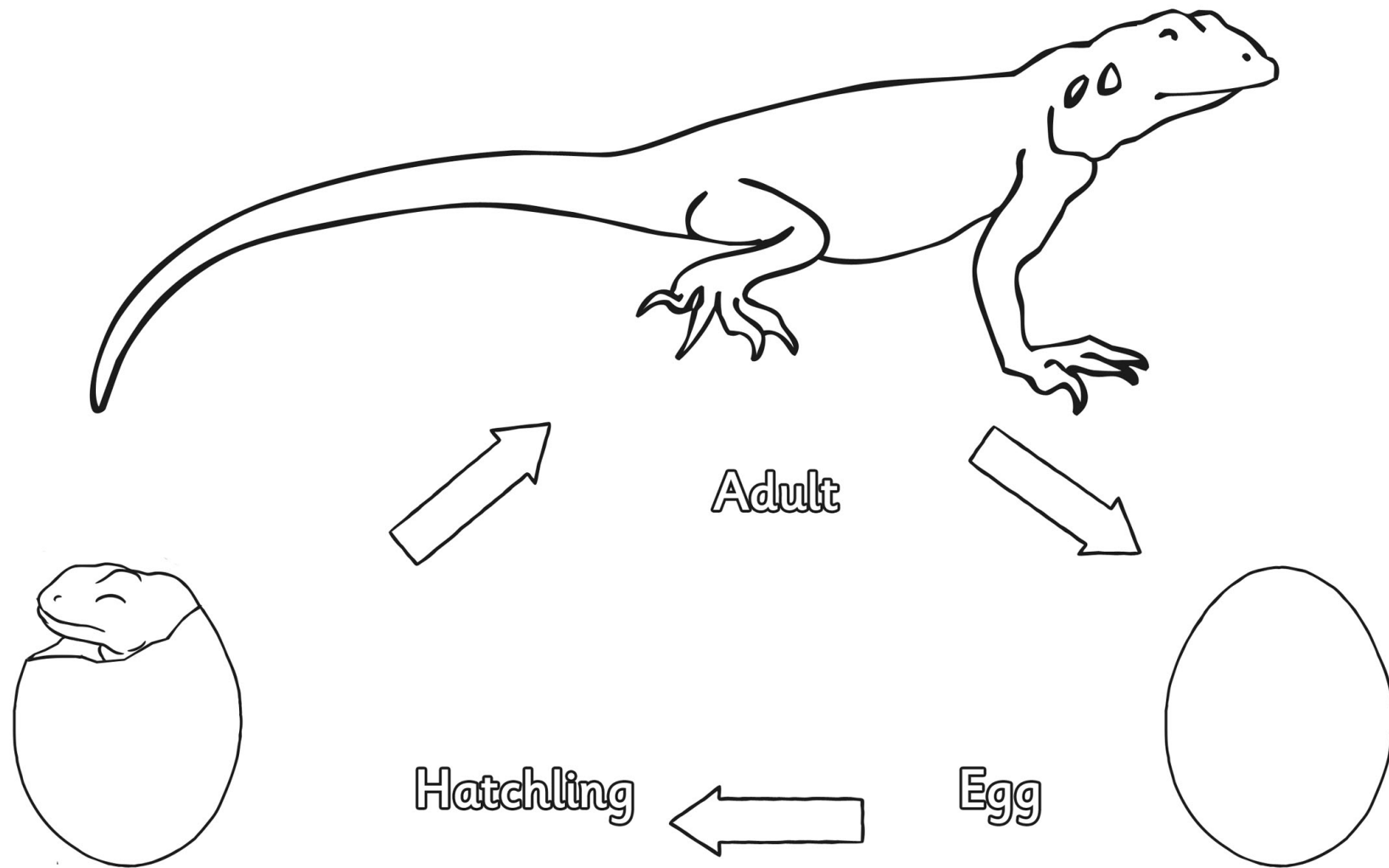
# Mammal Life Cycle (Cat)



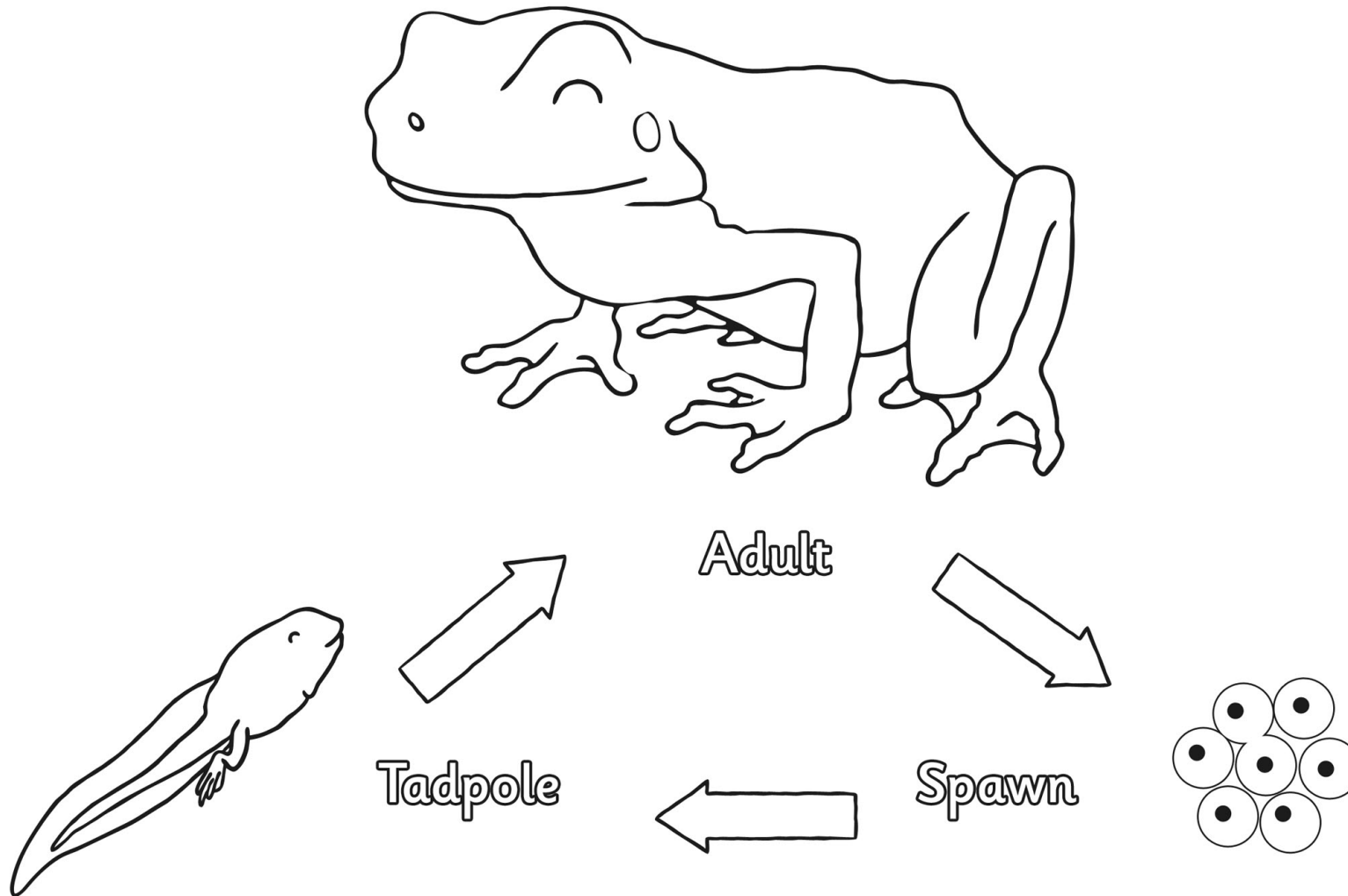
# Bird Life Cycle (Chicken)



# Reptile Life Cycle (Lizard)



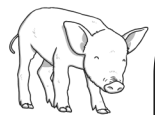
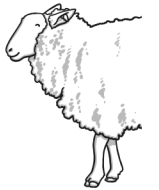
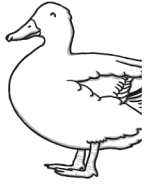
# Amphibians Life Cycle (Frog)



# Animal Growth



x m e n i p d d t f j w  
 e l o p d a t h j u w p  
 n i h s q b i r d e v r  
 w r m c j c h i c k u e  
 a k c p l a m m a m r g  
 p g s d e l i t p e r n  
 s s d o t m w t l u d a  
 a m p h i b i a n b c n  
 h a t c h l i n g u v c  
 h t w o m b a a b a b y  
 b x f l v y v f t x x t  
 t g g e l n j f l i k w



mammal  
 amphibian  
 reptile  
 bird  
 pregnancy  
 womb

egg  
 spawn  
 baby  
 hatchling  
 chick  
 tadpole

